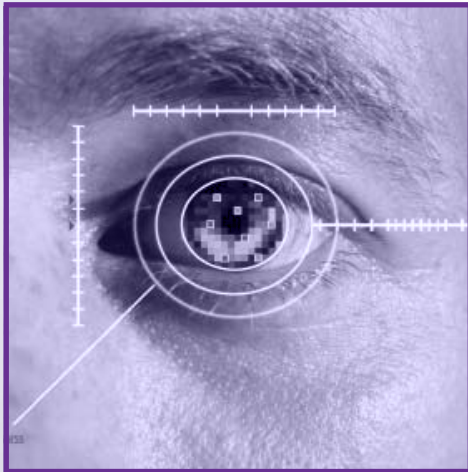


WiseEye® Surveillance System for Outdoor Asset/Perimeter Protection



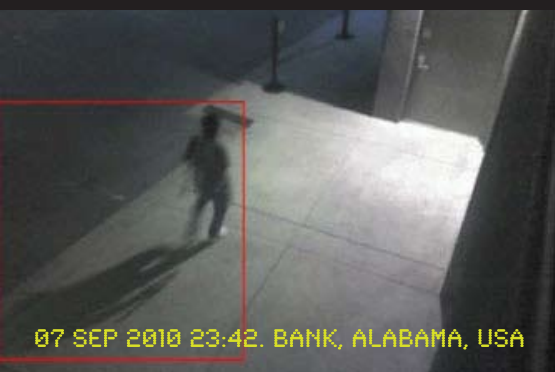
- Finally, a field-proven analytics-based video surveillance system
 - thousands of units working 24/7 worldwide, catching infiltrators and providing quality surveillance information with minimal nuisance from false alarms
- Minimize false alarm headache— lowers false alarm rate in the market (often under 1 false alarm per sensor per week)
- Save on expert consultants and days spent configuration and setup: no need for complex parameter setup or tuning
- Save on installation – system is Plug N' Play, self calibrating, with automatic adaptive scene learning
- Get alert video clips to your control center and smart phone in seconds
- A single operator can monitor dozens of sites totaling thousands of sensors, due to low false alarm rate
- Day/Night and All Weather operation; accurate detection even under conditions of rain, snow, dust, etc.
 - technology was developed specifically for harsh situations, supported by the Israeli Army
- Operational principle inspired by the human eye, and thus immune to
 - electromagnetic interference (EMI or RFI)
 - acoustic noise
 - interference from metal objects and conductive materials
 - object/background temperature differences
- Easily integrates with any control center platform and with any other security system, both as input or as output

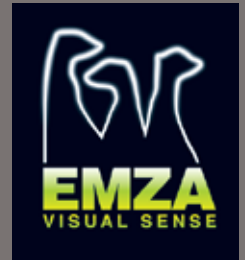




WiseEye® : Visual Analytics Sensor for Outdoor Asset/Perimeter Protection

- Complete, high-end surveillance system encapsulated into a single device
- Accurate people detection past 100 meters with lowest false alarm rate in the industry
- Day/Night and All Weather operation; accurate detection even under conditions of rain, snow, dust, etc. - technology was developed specifically for harsh situations, adopted by the Israeli Army
- Maintenance free, can work for years without seeing a technician
- Save on expert consultants and hours spent configuration and setup: the system is self calibrating, no need for complex parameter setup or tuning
- Remote setup and configuration over the network, friendly expert support when needed (rarely)
- Save on installation - Plug N' Play automatic installation; starts operating within 30 seconds of power on.
- No need for cameras, DVRs, encoders, terabytes of storage or air conditioning
- Field proven – thousands of units in 24/7 duty around the globe, -30C-60C
- Optional customized fast application development service

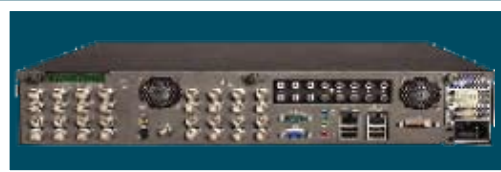




ECU: Emza Control Unit
your on-site autonomous control center

- Scalable solution, can support hundreds of WiseEye channels
- Full web support using a standard web browser (no need for client application)
- On-site storage of alert history and operational data
- IP-accessible from anywhere
- Low cost, low form factor, can be placed anywhere (indoors)
- Allows remote management and setup
- Automatic adjustments to any uplink bandwidth
- Intuitive interface, no expert knowledge is required
- Real time alerts on power or communication malfunction / sabotage





WiseShield™: upgrade your existing video camera installation to an unbeatable outdoors Intrusion Detection and Visual Verification

- Accepts up to sixteen analog cameras
- Full D1, PAL/NTSC 25/30 fps (including Color, B&W, IR & thermal video cameras)
- Powered by award-winning WiseEye® technology
- Save on expert consultants and hours spent configuration and setup: the system is self calibrating, no need for complex parameter setup or tuning
- Multiple detection rules for each video camera Avoid the headache of false alarms - 1 false alarm per camera per week
- Save on installation - Plug N' Play automatic installation; starts operating within 30 seconds of power on.
- Maintenance free, can work years without seeing a technician
- Remote setup and configuration over the network, intuitive interface, no expert knowledge is required



01 OCT 2010 04:42. CONSTRUCTION SITE,
ALBUQUERQUE, USA



16 JUN 2010 00:03. GRAFFITI ARTIST,
SEATTLE, USA.

WiseEye™: SPECIFICATIONS

OPERATION

Detection Range	Human - 80-100 meter, vehicle – 150 meter
Sensitivity	2 LUX (0 LUX with external IR)
Setup and Configuration	Remote over WAN through web browser
External conditions	All weather including rain, wind, snow, fog, or behind glass window
Automatic Scene learning	Within 30 seconds

OPTICS

Résolution	VGA - 640x480
Aperture	2.8
FOV	60° (diagonal) 50° (Horizontal)

HARDWARE

Processor	PXA270, 415MHz
Memory	32MB FLASH, 16MB RAM
Image Sensor	1/ 3.8" Color CMOS
Operating System	Linux, embedded web server

SOFTWARE

Interface protocols	TCP, UDP, HTTP, HTTPS, XML
Communication Interface	Ethernet –RJ45 Wifi - 802.11B/G
Video Output Format	Motion-JPEG (MJPEG), RTSP, JPEG
Alert markup	On image graphic overlay

GENERAL

In Voltage	9-18 VDC +/- 10%
Power Consumption	Ethernet – 2.5 Watt, Wifi – 4.5 Watt
Operating Temp. Range	-25°C- + 55°C
Unit Weight	~200 gram
Form Factor	Extreme Small factor 120 x 80 x 23 mm
Environmental Rating	Weather proof, IP66

ECU-016: SPECIFICATIONS

HARDWARE

Processor	Intel ATOM 330 processor (Codename: Diamondville) 2x 1.6 GHz core clock, 533 MHz FSB 2x 512kB L2 cache Passive CPU cooling Support DDR2 533MHz DDR SDRAM
Operating Systems	Linux
Software	Emza proprietary ECU application
Memory	1GB Single channel DDR2 533
Chipset	Intel 945GC + ICH7
Ethernet	Marvell 88E8056 IEEE 802.3u 1000Base-T compliant 10Mb/s, 100Mb/s and 1000Mb/s operation
Hard Drive	250GB
VGA	Intel GMA 950 256bit 3D engine with a powerful 400MHz core DirectX 9 support Dynamic Video Memory Technology (DVMT)3.0
AUDIO	Realtek ALC662 Supports Analog 5.1 channel output
Peripherals	No Monitor, Keyboard or mouse Required
LAN	1 RJ45 port
USB	3 ports

OPERATING CONDITIONS

Power Supply	Input: 100~240V AC Output: 12V DC, 50/60 Hz, max. 5A External 60W fanless power supply
Temperature	Operating: 10° to 35° C (50° to 95° F) (30° max on the Ultra Small desktop chassis) Non-operating: -40° to 65 ° C (-40 ° to 149 ° F)
Relative Humidity	Operating: 20% to 80% (non-condensing) Non-operating: 5% to 95% (non-condensing)
Vibration	Operating: 0.25G at 3 to 200Hz at 0.5 octave/min Non-operating: 0.5G at 3 to 200Hz at 1 octave/min
Form Factor	Slim Chassis (L)9.8 X (W)7.3 X (H)2.8 Inches (24.9 X 18.5 X 7.1 cm)

WiseShield-16: SPECIFICATIONS

PERFORMANCE

Setup and Configuration	Remote over WAN through web browser
Automatic Scene learning	Within 30 seconds
Alert Video	MJPEG, JPEGs

HARDWARE

CPU	Intel Core 2 Quad CPU
Out format	VGA 640 x 480
Codec	MJPEG, RTSP
Memory	2GB DDR2
Front Panel	Power On LED (Green)
	LAN Activity LED (Yellow)
	HDD Activity (Yellow)
HDD	SATA II, 3.5" 512GB
In voltage	DC 10~36V, up to 5 AMP
Video In	16 x BNC inputs CVBS 1.0Vp-p, with 75 ohm
Video Out	16 x video looping via BNC
Power Supply	AC 90-260V @ 47-63 Hz
IN / Out analog Resolution	16 X 720 x 480 NTSC
	16 X 720 x 576 PAL
LAN	2 x RJ45 GbE LAN port
USB	USB 2.0, 4 ports
OS	Linux Ubuntu

GENERAL

Form Factor	19" Rack mount (431 x 88 x 471.5 mm)
Approvals & Compliance	CE, FCC Class A, RoHS
Temperature	0°C ~ 40°C